



TECHNO PACK™

TECHNO PACK™ Product Line

Special features:

- Easy to transport due to compact housing
- Independent power supply via battery operation
- Integrated LCD color flat screen display
- Choice between powerful 24 W or 50 W high-performance light source
- Storage of digital documentation on PCMCIA Compact Flash memory card or 3.5" disks
- Robust industrial design
- Integrated keyboard
- Compatible with KARL STORZ TELECAM® camera heads and videoscopes
- Diverse software functions
- World power supply 100-240 VAC, 50/60 Hz or alternatively 12 V DC connection

**KARL STORZ TECHNO PACK™ –
THE ALTERNATIVE SOLUTION FOR
MOBILE INSPECTION TEAMS**



KARL STORZ TECHNO PACK™

– The Mobile Compact Solution –

Special features:

- Independent power supply via battery operation with powerful 12 V/10 Ah battery
- Easy to transport due to compact housing
- Integrated 6.4" color flat screen display, 8-bit color depth
- Light sensitivity can be regulated via camera integration mode up to 60 times higher
- Integrated PCMCIA card slot, suitable for a wide range of industrial applications
- Selection of functions via menu bar
- Portable LCD flat screen monitor 80404 can be connected
- With integrated 2-point laser measurement software

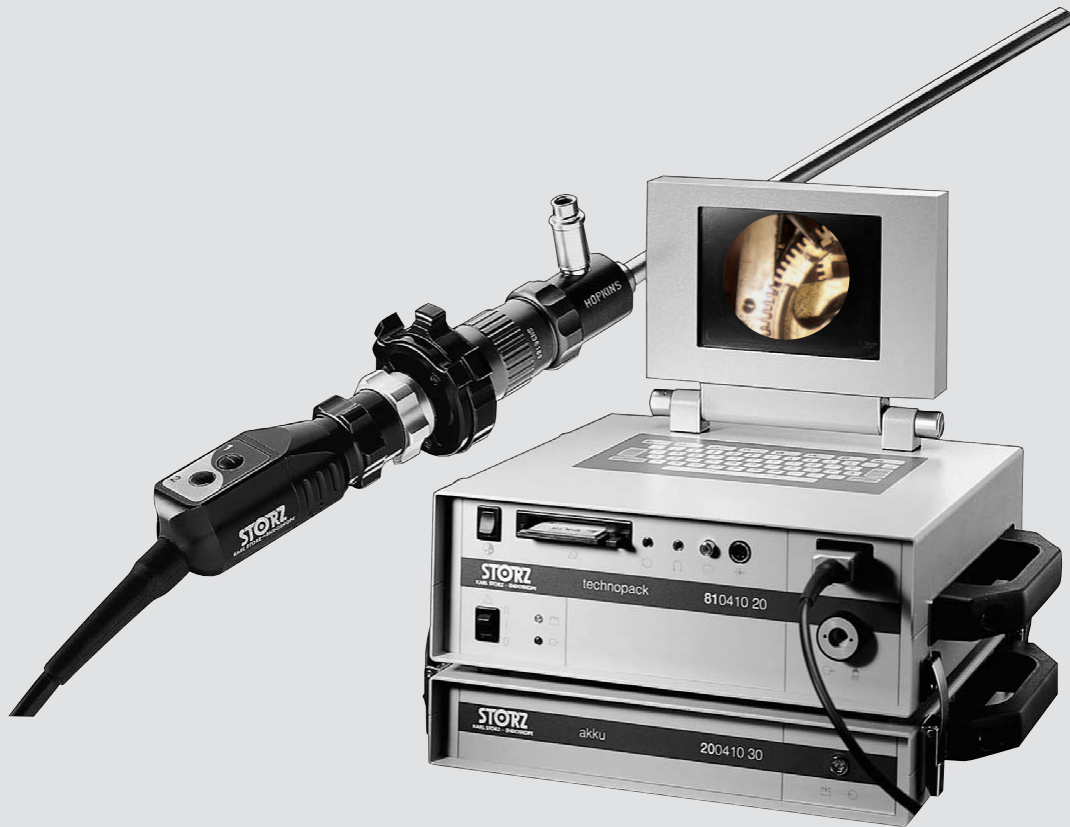
Specifications:

Color systems:	PAL, NTSC
Resolution:	subject to camera head used > 450 lines
Exposure:	automatic: with infinitely variable shutter and integration mode manual: sensitivity increased via integration mode, exposure time up to max. 1.2 seconds possible
Light source:	Xenon lamp, 24 W
Power supply:	world power supply, 85-264 V~, 47-440 Hz, integrated battery charger
Accumulator battery:	12 V/10h Ah, separate housing, can be coupled to TECHNO PACK™ system
Image storage:	PCMCIA card slot, type 1-3, ATA data card for Windows-Bitmap image format (.bmp), wave format for audio files (.wav), ASCII text (.txt)
Monitor:	6.4" flat screen, 8-bit color depth
Keyboard:	QWERTZ membrane keyboard according to European standard system with control buttons

Connections:

Video output:	FBAS signal to BNC socket Y/C signal to 4-pin Mini-DIN socket
Video input:	FBAS signal to BNC socket
LCD glasses:	FBAS signal to Cinch socket, power supply: 4-pin Mini-DIN special
Microphone:	mono condensator microphone with phantom feed, 3.5 mm stereo jack plug, 3-pin
Headphones:	mono, 3.5 mm stereo jack plug, 3-pole
Line:	audio signal to Cinch socket
Serial port:	RS-232 to 9-pin D-Sub socket
Accessories:	Remote socket for external units, Open Collector Out, TTL in ACC 1: 3.5 mm stereo jack plug 3-pole ACC 2: 3.5 mm stereo jack plug 3-pole
Dimensions:	385 x 150 x 260 mm (w x h x d incl. monitor without battery unit) 385 x 215 x 260 mm, (w x h x d incl. monitor with battery unit)
Weight:	13.5 kg with battery unit
Certified to:	CE and protection class 1

KARL STORZ TECHNO PACK™ – The Mobile Compact Solution –



with camera head

- 81 0410 01 TECHNO PACK™, PAL**
consisting of:
- 81 0410 20 TECHNO PACK™, Base Unit**
 - 20 2120 30 Camera Head, TELECAM® SL Parfocal Zoom**
 - 20 0410 30 Battery Unit**
 - 20 0410 31 Battery Charger, with Schuko plug**
 - 20 0410 32 PCMCIA 64 MB PC-Card ATA**
 - 400 A Mains Cord, length 400 cm**
 - 80134 Storage and Transport Case, with integrated castors**

without camera head

- 81 0410 02 TECHNO PACK™, PAL**
consisting of:
- 81 0410 20 TECHNO PACK™, Base Unit**
 - 20 0410 30 Battery Unit**
 - 20 0410 31 Battery Charger, with Schuko standard plug**
 - 20 0410 32 PCMCIA 64 MB PC-Card ATA**
 - 400 A Mains Cord, length 400 cm**
 - 80134 Storage and Transport Case, with integrated castors**

81 0411 01 Same, color system NTSC

81 0411 02 Same, color system NTSC

Accessories:

- 81 1305 25 Spare XENON Lamp, 24 W**
- 20 0900 38 Head-Set**
- 20 0420 71 12 VDC Mains Cord, length 150 cm**
- 20 0420 70 12 VDC Mains Cord, length 300 cm**

KARL STORZ TECHNO PACK™ II ^{NEW}

– The Mobile Desktop Option –

Special features:

- Independent power supply via battery operation
- Easy to transport due to compact housing
- Integrated handle
- Integrated 12" color flat screen display, 16-bit color depth
- Light sensitivity can be regulated via camera integration mode
- Integrated PCMCIA card slot and 3.5" disk drive
- Diverse software functions, such as, for example, zoom function, image gallery, image comparison, filter, etc.
- Interchangeable light source module with choice between 24 W and 50 W
- With integrated 2-point laser measurement software

Specifications:

Color systems:	PAL, NTSC
Resolution:	subject to camera head used > 500 lines
Exposure:	automatic: with infinitely variable shutter and integration mode manual: sensitivity can be increased via integration mode, exposure time up to max. 1.2 seconds possible
Light source:	choice between 24 W or 50 W light arc lamp (HI-Lux) light arc lamp (HI-Lux)
Power supply:	world power supply, 85-264 V~, 47-440 Hz, integrated battery charger and battery charger display
Accumulator battery:	12 V/10h Ah NiMH separate housing, can be coupled to TECHNO PACK™ II – system
Image storage:	PCMCIA card slot , type 1-3, ATA PCMCIA or Compact Flash data card and 3.5" disk drive for Windows JPG image format (.jpg), wave format for audio files (.wav), ASCII text (.txt)
Monitor:	12" flat screen, 16-bit color depth, 800 x 600 resolution
Keyboard:	QWERTY membrane keyboard according to US standard system control buttons with integrated mouse

Connections:

Video output:	FBAS signal to BNC socket Y/C signal to 4-pin Mini-DIN socket
Video input:	FBAS signal to BNC socket
LCD glasses:	FBAS signal to Cinch socket, power supply: 4-pin Mini-DIN special
Microphone:	mono condensator microphone with phantom feed, 3.5 mm stereo jack plug, 3-pole
Headphones:	mono, 3.5 mm stereo jack plug, 3-pole
Line:	audio signal to Cinch socket
Serial-Port:	RS-232 to 24-pin D-Sub socket
Accessories:	Remote socket for external units, Open Collector Out, TTL in ACC 1: 3.5 mm stereo jack plug 3-pole ACC 2: 3.5 mm stereo jack plug 3-pole

Dimensions of TECHNO PACK™ II system:

305 x 160 x 260 mm, (w x h x d incl. monitor **without** battery unit)
 305 x 160 x 354 mm, (w x h x d incl. monitor **with** battery unit)

Weight of system case with battery unit:

21 kg with battery unit

TECHNO PACK™

Base Unit:	7.9 kg
Battery unit only:	3.5 kg
Certified to:	CE and protection class 1

KARL STORZ TECHNO PACK™ II ^{NEW}

– The Mobile Desktop Option –



- 81 0430 01 TECHNO PACK™ II, PAL**
consisting of:
- 81 0430 20 TECHNO PACK™ II**, Base Unit including **20 0430 28** lamp module 50 Watt and 1442391 12" flat screen
 - 20 0410 32 PCMCIA 64 MB PC-Card ATA**
 - 400 A Mains Cord**, length 400 cm
 - 547 S S-VHS (Y/C) Connecting Cable**, length 180 cm
 - 80134 B Storage and Transport Case**, with integrated castors
- 81 0431 01 TECHNO PACK™ II, NTSC**
consisting of:
- 81 0431 20 TECHNO PACK™ II**, Base Unit, including **20 0431 28** lamp module 50 Watt and 1442391 12" flat screen
 - 20 0410 32 PCMCIA 64 MB PC-Card ATA**
 - 400 B Mains Cord**, length 400 cm
 - 547 S S-VHS (Y/C) Connecting Cable**, length 180 cm
 - 80134 B Storage and Transport Case**, with integrated castors

Accessories:

- 81 0430 30 TECHNO PACK™ II Battery**, NiMH
- 20 0430 26 Lamp Module 24 Watt** (without light intensity adjustment) (PAL)

KARL STORZ TECHNO PACK™ II ^{NEW}

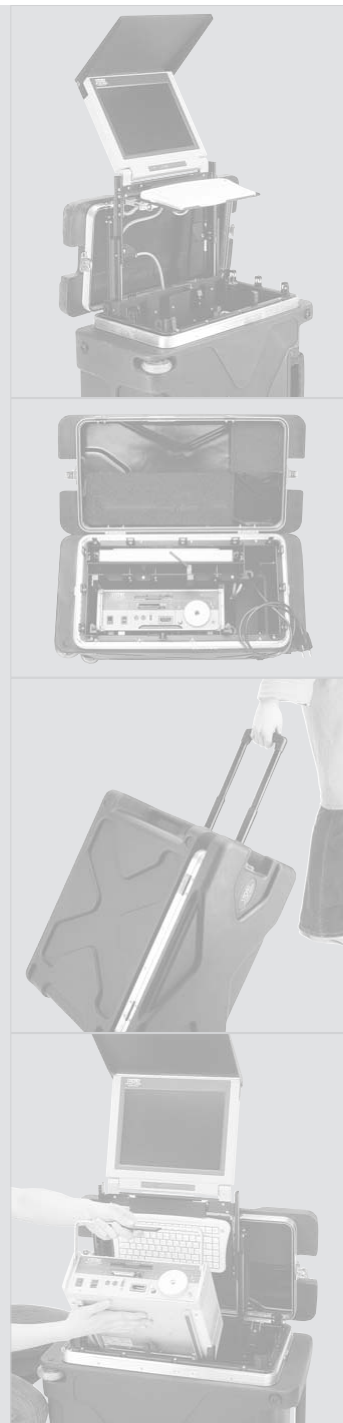
– System Case –



- 81 0430 05 System Case TECHNO PACK™ II, PAL**
consisting of:
- 81 0430 20 TECHNO PACK™ II, Base Unit,**
including **20 0430 28 lamp module 50 Watt**
 - 20 0410 32 PCMCIA 64 MB PC-Card ATA**
 - 547 S S-VHS (Y/C) Connecting Cable, length 180 cm**
 - 400 A Mains Cord**
 - 80137 System Case with Schuko power plug,**
including **1442391 12" flat screen**
- 81 0431 05 System Case TECHNO PACK™ II, NTSC**
consisting of:
- 81 0431 20 TECHNO PACK™ II, Base Unit,**
including **20 0431 28 lamp module 50 Watt**
 - 20 0410 32 PCMCIA 64 MB PC-Card ATA**
 - 547 S S-VHS (Y/C) Connecting Cable, length 180 cm**
 - 400 B Mains Cord**
 - 80137 U System Case with US power plug,**
including **1442391 12" flat screen**

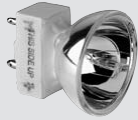
Accessories:

- 20 0430 26 Lamp Module 24 Watt** (without light intensity adjustment) (PAL)
- 20 2120 30 Camera Head TELECAM® SL Parfocal-Zoom, PAL**
- 20 2121 30 Camera Head TELECAM® SL Parfocal-Zoom, NTSC**
- 80404 K2A Connecting Cable, for LED Monitor 80404 LCD**



KARL STORZ TECHNO PACK™ II ^{NEW}

Accessories



81 130 525 HiLux Spare Lamp, 24 Watt

81 131 021 HiLux Spare Lamp, 50 Watt

20 090 038 Head-Set

20 042 070 12 VDC Mains Cord, length 300 cm

20 042 071 12 VDC Mains Cord, length 150 cm



20 041 032 PCMCIA Memory Card

20 042 026 PCMCIA Card Reader for USB interface

88 002 010 TV Card USB-AV-190, including software with USB interface

20 043 026 Lamp Module with 24 Watt Lamp, for TECHNO PACK™ II (without manual exposure adjustment) (PAL)

20 043 126 Same, (NTSC)

20 043 028 Lamp Module with 50 Watt Lamp, for TECHNO PACK™ II (PAL)

20 043 128 Same, (NTSC)



20 200 130 U External Keyboard, with US-English character set

81 043 030 TECHNO PACK™ II Battery, NiMH, 12 V/10 h